



# TOYOTA

## LAND CRUISER SINGLE CAB 2022



### SPECIFICATION

<b>Model Year:</b>	2022	<b>Engine Capacity:</b>	4.0 L
<b>Vehicle Type:</b>	Pickup Truck	<b>Engine Type:</b>	V6 Petrol
<b>Vehicle Status:</b>	Used	<b>Horsepower:</b>	228 bhp
<b>Mileage:</b>	21,000 km	<b>Torque:</b>	360 Nm
<b>Driver Side:</b>	Left Hand Drive	<b>Transmission:</b>	Manual
<b>Body Condition:</b>	Excellent	<b>Drive Type:</b>	4x4 (4WD)
<b>Mechanical Condition:</b>	Excellent	<b>Top Speed:</b>	180 km/h
<b>Fuel Tank Capacity:</b>	180 L	<b>Number of Cylinders:</b>	6



## INTERIOR

Seating Capacity: 3 seats

Seat Material: Fabric

Air Conditioning: Manual

Audio System: AM/FM Radio

Power Steering Power Windows

Central Locking

Power Door Mirrors

Winch: Electric winch available on higher models

Glove Box: Standard, no cooling option

Floor Mats: Rubber or basic fabric

Door Ajar Warning: Basic indicator

Instrumentation: Analog  
with basic digital indicators

Clock: Analog

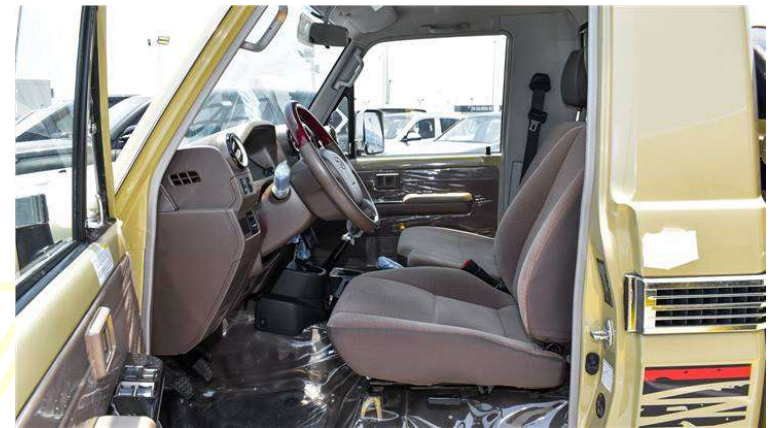
Storage Compartments: Basic, limited

Safety Features: Fire extinguisher,  
optional dual front airbags in some markets

Additional Features

Keyless Entry: Yes

Fog Lamps: Included



Description: The 2020 model continues the tradition of durability and reliability in the Toyota Land Cruiser series.

It offers robust performance for both off-road and everyday utility, with basic features ensuring a dependable driving experience.



## EXTERIOR

Front Bumper: Heavy-duty design, suitable for off-road use, with integrated skid plate

Rear Bumper: Basic, utilitarian design with tow hook provisions

Side Steps: Optional, for easier access

Roof Rails: Not included

Tow Hooks: Front and rear, for recovery purposes

Underbody Protection: Enhanced

with additional skid plates for improved off-road durability

Headlights: Halogen, with improved reflectors for better visibility

Fog Lights: Included, with robust housing

Tail Lights: Conventional with bulb, updated design for better visibility and durability

Indicators: Integrated into side mirrors

Side Mirrors: Manual adjustment, with heated option available

Window Tint: Standard on rear windows, optional on front windows

Wipers: Front with variable intermittent settings, rear wiper with improved functionality

Rear Window: Fixed, with heating element

Grille: Updated design with Toyota badge

Paint Options: Expanded to include both metallic and solid finishes

Door Handles: Body-colored

Mud Flaps: Optional, to protect the lower body from debris

Wheel Arch Cladding: Rugged, with updated design for better protection

Mudguards: Optional, to reduce splashing and protect the body

Antenna: Fixed mast type, with enhanced reception

Wheels: 16-inch alloy wheels (standard), with optional all-terrain tires

Interior Features Seating Capacity: 3 seats

Seat Material: Durable fabric with optional vinyl for easier cleaning

Air Conditioning: Manual, with improved cooling efficiency

Audio System: AM/FM Radio with optional CD player and Bluetooth connectivity

Power Steering: Yes

Power Windows: Optional on higher trims

Central Locking: Optional on higher trims

Power Door Mirrors: Optional

Winch: Electric winch available on higher trims

Glove Box: Standard, with optional cooling feature

Floor Mats: Rubber or fabric, with optional all-weather mats

Door Ajar Warning: Enhanced indicator system

Instrumentation: Updated analog/digital display with improved readability and new graphics

Clock: Digital

Storage Compartments: Expanded with additional practical storage solutions

Safety Features: Standard fire extinguisher, optional dual front airbags, improved crash safety features

