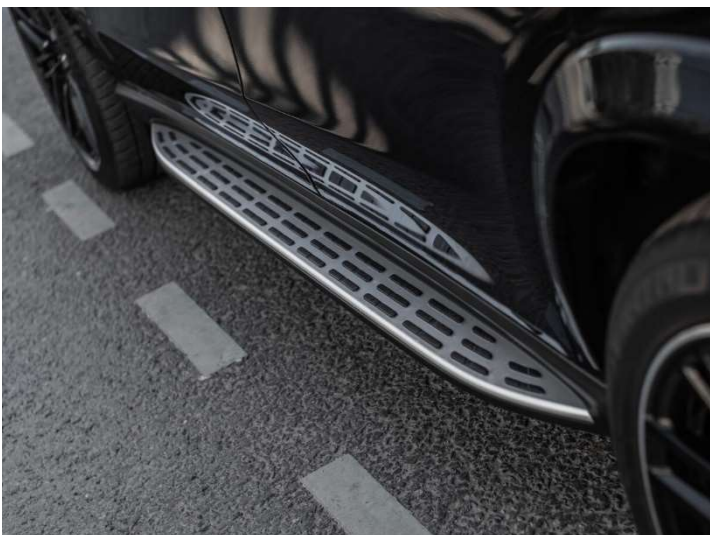


## MERCEDES GLS 63 X167 AMG





Mercedes-Benz







## SPECIFICATION

### Performance & Powertrain

- **Power:** 466 kW (634 hp)
- **Torque:** 850 Nm
- **Engine:** 8-cylinder, displacement 3.982 cc
- **Transmission:** 9-speed shifttable automatic
- **Drive Type:** All-wheel drive with center rear limited-slip differentials
- **Acceleration (0-60 mph):** 4.1 seconds
- **Combined Fuel Consumption:** 11 – 12 L/100km
- **CO2 Emissions:** 286 g/km
- **Emission Standard:** Euro 6e



### Dimensions & Weight

- **Dimensions (L x W x H):** 5209 x 2157 x 1823 mm
- **Wheelbase:** 123.4 in (3135 mm)
- **Kerb Weight / Max Weight:** 2,630 kg / 3,395 kg
- **Cargo Capacity (All Seats Up):** 17.4 cu.ft.
- **Maximum Cargo Capacity:** 84.7 cu.ft.



### Exterior Features

- **Wheels:**
  - Front: 10x23" offset 45 with 285/40 R23 tires
  - Rear: 10x23" offset 45 with 325/35 R23 tires
- **Design Enhancements (ROLFHARTGE Edition):**
  - Carbon Shark Gills with fine metal emblem
  - Carbon Mirror Cap
  - Carbon Rear Spoiler with emblem
  - Radiator Grille, Engine Hood,
  - Deck Lid Emblems replacing original Mercedes emblems
  - Luxury high-pile carpet mat set in Anthracite
  - Liquid Glass Surface Protection for easy maintenance



### Interior Features

- **Seats:**
  - Premium leather and suede bucket seats
  - 10-way power-adjustable driver passenger seats with lumbar support thigh extension
  - Multi-level heated and ventilated seats (driver and passenger)
  - Massaging front seats
  - Power-folding split-bench third-row seats
  - Reclining and split-folding rear seats
- **Climate & Comfort:**
  - Five-zone climate control
  - Interior air filtration with AELUS Air Purifier (HEPA H13)
  - Adaptive cruise control
  - Power rear seat easy entry
  - Cooling heating seats (front and rear)







## Safety & Assistance Systems

- **Safety:**
  - Dual front and side airbags (front, rear, and third row)
  - Blind spot, lane departure, rear cross-traffic alert
  - Lane keep assist
  - Pre-collision and post-collision safety systems
  - Automatic emergency braking and brake drying
  - LED adaptive headlights with cornering lights
- **Parking Assistance:**
  - Front, side, and rear cameras
  - Parking sensors with automatic parking assist



## Telematics & Infotainment

- **Telematics:**
  - Emergency Service,
  - Airbag Deployment Notification
  - Stolen Vehicle Tracking
  - Roadside Assistance
  - Concierge Service,
  - Destination Guidance,
  - Download
- **Infotainment:**
  - 12.3-inch infotainment display
  - Burmester premium surround sound with 590 watts,
  - 13 speakers,
  - 2 subwoofers
  - Android Auto
  - Apple CarPlay integration
  - Wireless charging



## Suspension & Handling

- Four-wheel independent suspension
- Front and rear stabilizer bars
- Descent control







Mercedes-Benz







Mercedes-Benz

